



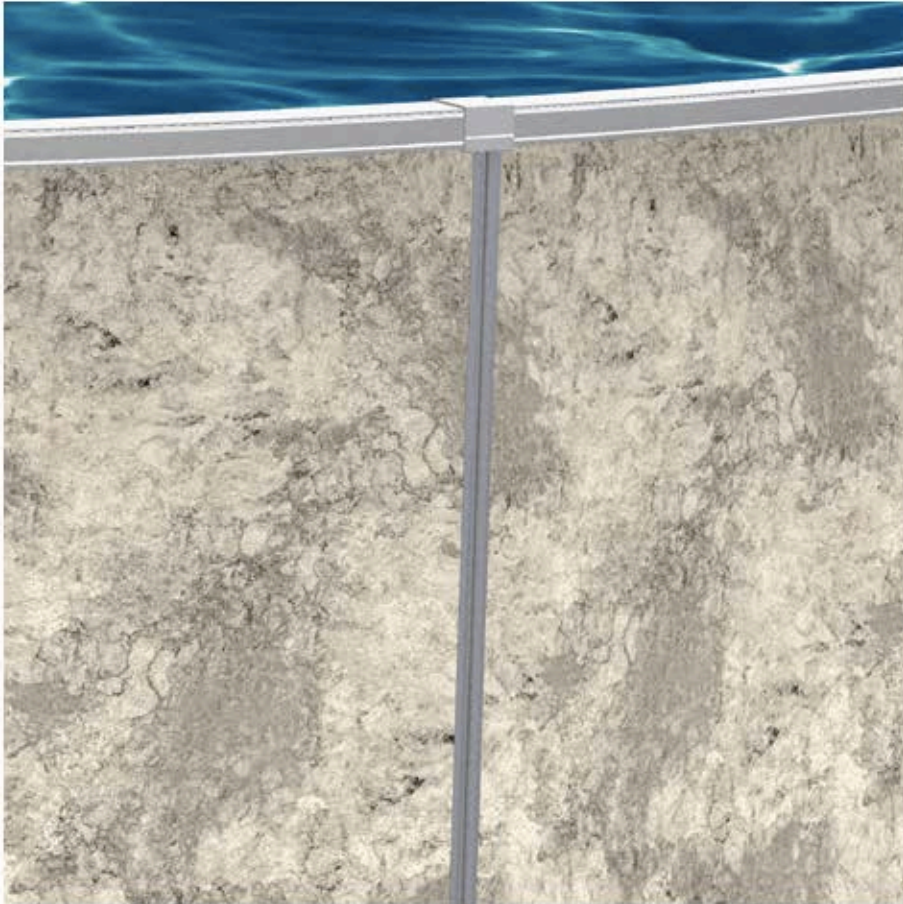
---

Where beauty, ease of assembly and strength  
equals optimum versatility

---

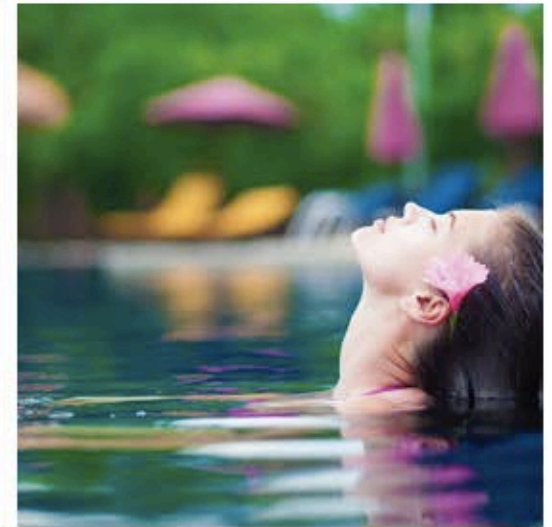


Where beauty, ease of assembly and strength equals optimum versatility



The OPTIMUM pool is beautifully and simplistically designed, complimenting your yard with a clean and streamlined look with no obtrusive uprights.

It's made strong, in the USA, using aerospace engineering technology and the finest marine grade materials.



There's simply no pool that is as affordable and versatile as the OPTIMUM pool.

Whether you choose above, semi, in-ground, or even sloped terrain... an investment in the OPTIMUM pool is one that will enhance your yard and the pleasure you and your family share for years to come.



---

Same insulated sandwich panel construction  
used in aerospace engineering

---



The benefit of this construction is an unmatched strength and stiffness to weight ratio, accentuating the desired characteristics of both materials.

The insulated sandwich panel construction allows for minimal components and ease of installation

---

### High resistance to corrosion & heat loss

---

The structurally insulated OPTIMUM panels have an R-value as high as 10, maintaining water temperature up to 5-10 degrees warmer than a standard above ground pool and therefore saving money.

Aluminum Alloy acrylic coated skins stand up to the elements – resisting oxidation and corrosion

Expanded polystyrene (EPS) foam core – When subject to water, the structural integrity of an OPTIMUM composite panel is not adversely affected due to its closed-cell construction.



Lifetime Warranty

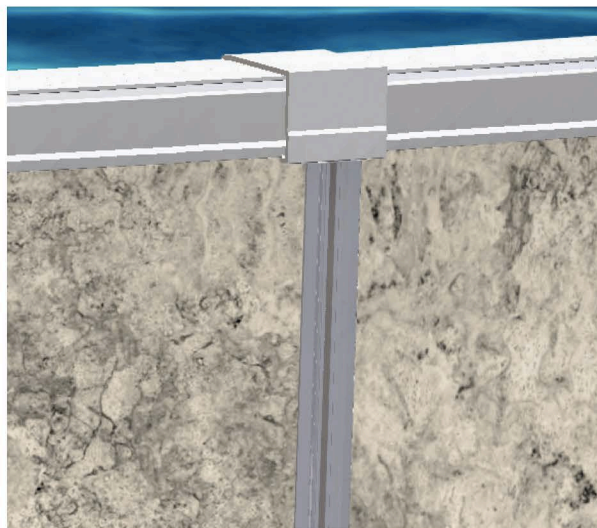
The components of your OPTIMUM pool have been crafted using the best materials and manufacturing methods.

This attention to quality allows us to offer you a generous lifetime warranty, even warranted against ice, guaranteeing that your investment will be backed by years of experience, dedication to product performance, and commitment to your satisfaction.

## Sizes

Round: 16' | 18' | 24' | 27'

Oval: 16' x 24' | 16' x 32' | 18' x 32'

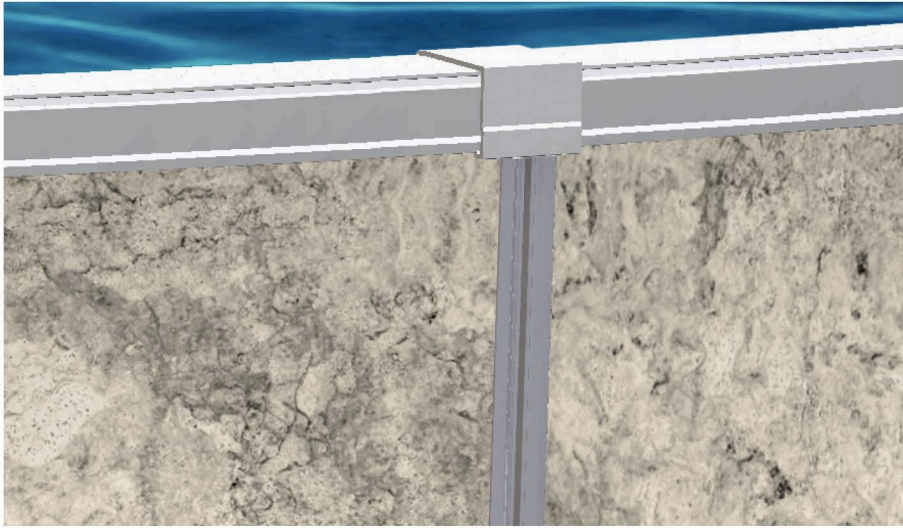




---

Environmentally Conscious  
Safer for the environment and your family.

---



The main materials used in the OPTIMUM pool (EPS & Aluminum) are the two most commonly recycled materials in the world.

The energy conservation of your OPTIMUM pool will save \$1000's through its lifetime in heating costs.

OPTIMUM pool utilizes an environmentally friendly adhesive for bonding the composite panels.

The adhesive's peel strength is up to twice as strong as other toxic adhesives that are currently available in the industry.

